

Loft Bed over a King Bed Assembly

8/26/24



This set of instructions covers the assembly and attaching of the lower King Size bottom bunk. Please read these instructions and the Multi-Width Bunk Bed Assembly Instructions before starting assembly. Once the upper bed is finished the lower King bunk will be need to be moved into place. An extra helper may be needed to move the bunk into place.

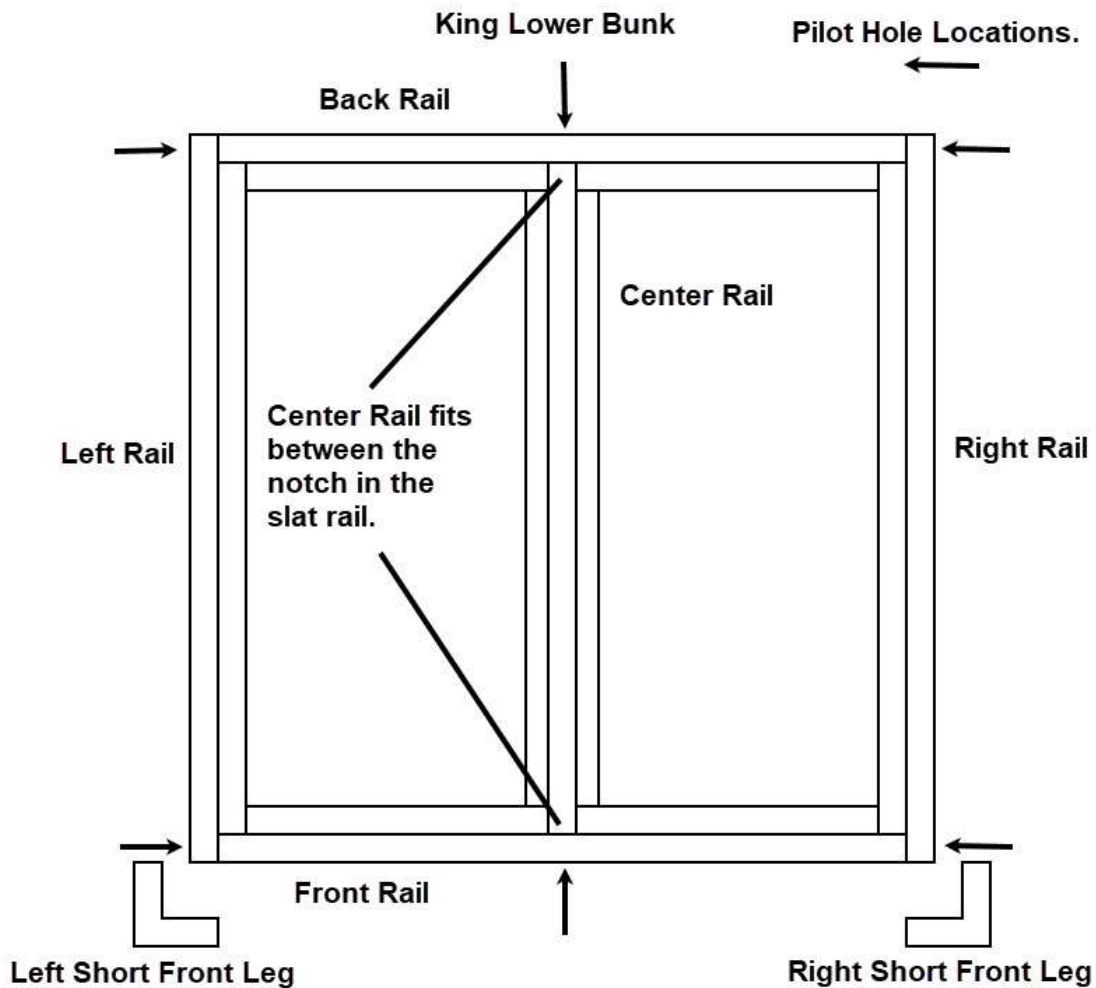
To start, assemble the top frame of the bed follow pages 1 – 6 of the Multi-Width Bunk Bed Assembly Instructions. The top frame also includes a Center Leg. The center leg helps support the lower bunk and the wall of slats above the lower bunk as shown on the picture above. The back rail of the upper bunk has 4 pilot to attach the leg. The leg mounts to the back side of the rail. Line up the leg with the pilot holes and attach the leg through the inside of the back rail using 2-1/2" screws.

Once the top frame has been assembled the lower bunk frame can be assembled. To assemble the lower bunk frame follow page 6 and 7 of the assembly instructions.

Note: The Left and Right Back legs have 2 sets of carriage bolt holes in each leg. Make sure to insert carriage bolts in both holes before assembling the top frame.

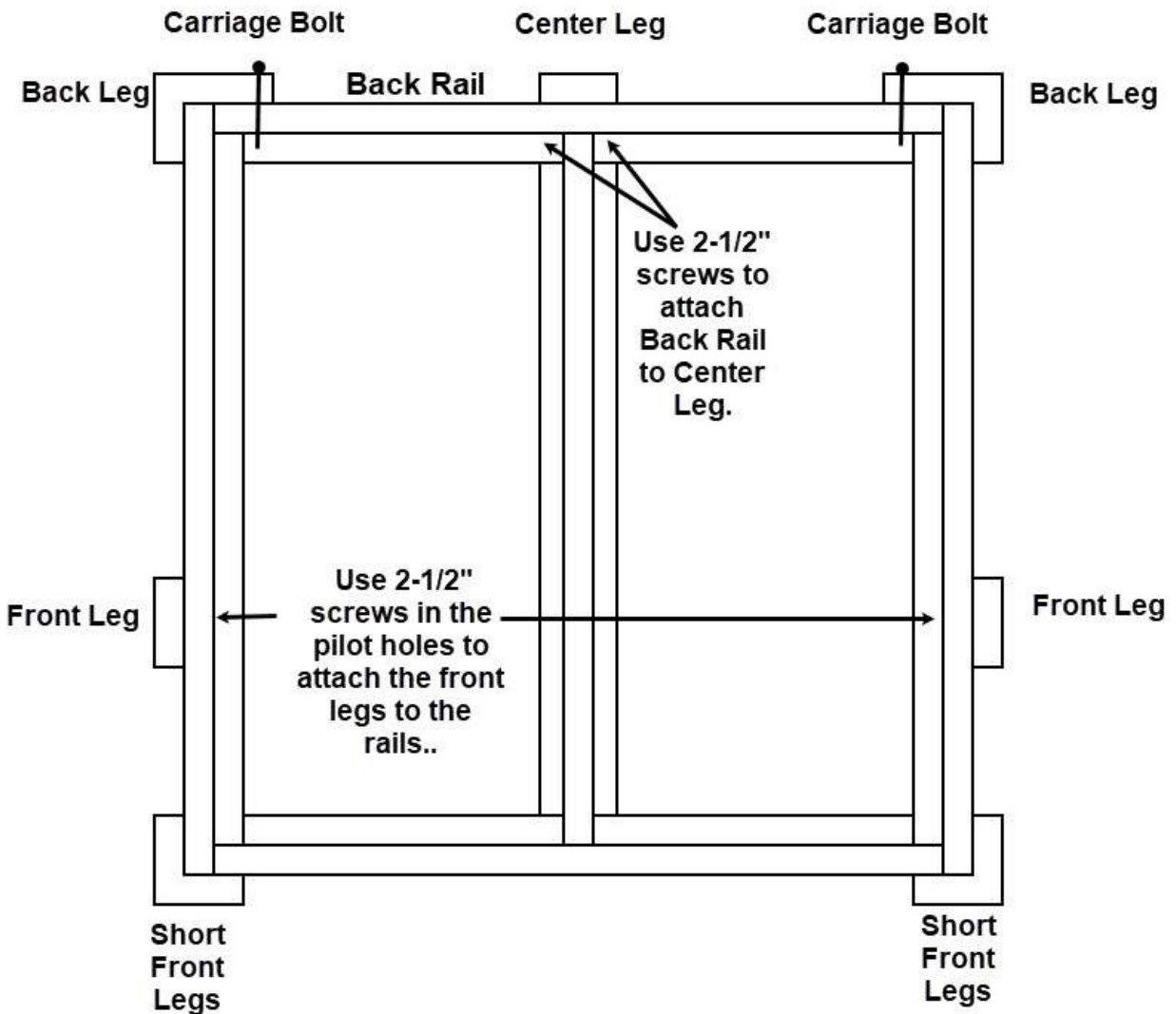
For the King bottom bunk the Headers are labeled as the Front and Back Rails. The Back Rail will have one carriage bolt hole on each end will be mounted to the back legs as shown in the drawing on the next page.

Once the frame has been assembled add the Front Legs. Next slide the Center Rail with the legs attached into place. To do so gently lift the Back Rail end of the frame and slide the Center Rail below the Back Rail. Line up the Center Rail with the notch in Front and Back Rails and lower it into place, Attach the Center Rail to the front and Back Rail using 2-1/2" screws in the pilot holes. The drawing below shows where the pilot holes are.



Next attach the lower bunk frame to the upper bed frame. Slide the lower bunk between the front legs. Make sure the back rail lines up with the carriage bolts. The lower bunk does not include back legs as shown in the instructions instead the carriage bolts and Center Leg will support the back rail. Slide the beds together and add the washers and nuts to the carriage bolts and tighten the nuts. Next move to the Center Rail, around the Center Rail are a set of pilot holes to attach the Back Rail to the Center Leg. Use 2-1/2" screw to attach the rail to the leg.

Next attach the Right and Left Rails to the Front Legs. To Attach the rails follow page 7 of the the Multi-Width Bunk Bed Assembly Instructions.. Use 2-1/2" screws to secure the rails to the legs. The assembly of the lower frame is now finished. To finish assembling the rest of the bed follow pages 8 – 19. The Wall Of Slats and custom bookshelves can be added when the assembly of the bed is finished.



Wall of Slats (Optional)

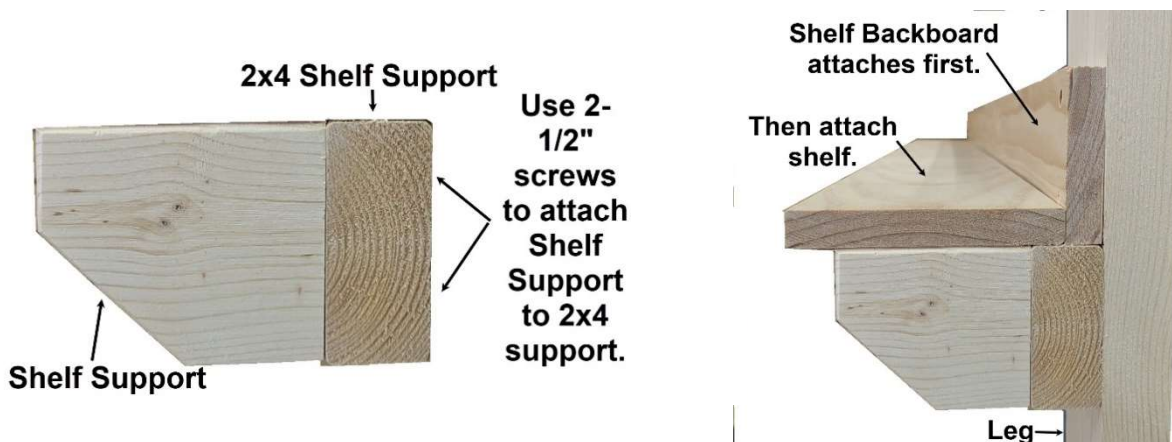
Once the bed is finished the Wall of Slats can be added. The slats are installed the same way as a slatted headboard as shown on page 16 of the Multi-Width Bunk Bed Assembly Instructions. Use the hardware and spacers included in the Slatted Headboard parts bag to attach and space the slats.

Place the first slat so that it touches the bottom of the back rail and attach the slat to the Back and Center Leg using 1-5/8" screws in the pilot holes. Add the next slat and place the spacer between the slats and attach. Repeat until all the slats have been attached.

Custom Bookshelves (Optional)

The bookshelves can be added once the Wall of Slats have been added. To assemble the shelves mount the Shelf Supports to the 2x4 Shelf Supports using 2-1/2" screws. The pilot holes are on the ends and center of the 2x4 Supports. Once the supports have been attached mount the 2x4 support to the front and back legs using 2-1/2" screws.

To finish the shelves mount the backboard first as shown in the picture below using 1-5/8" screws into the legs then add the shelves. Attach the shelves to the shelf supports using 1-5/8".



Drawers and 1x4 Trim (Optional)

To build the drawers follow the instructions in the Storage Drawer Assembly instructions kit. To finish the bed once the solid platform has been added the 1x4 trim pieces can be added along the edge of the bottom bunk with 1-5/8" screws. Attach the trim pieces using the pilot holes in the trim along the sides of the Right and Left Rails as shown in the picture on the 1st page.